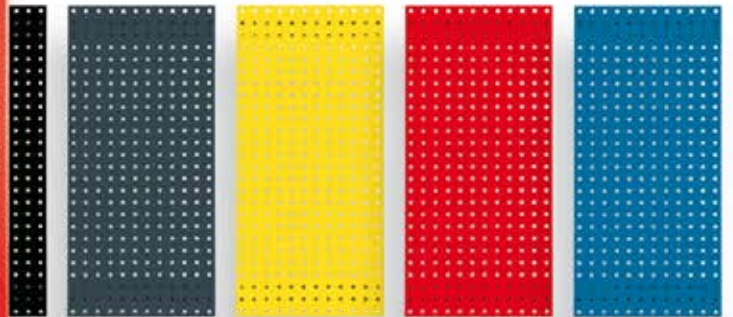


K15



KS TOOLS



*Innovation is
our mission!*



	PAGE
WORKBENCHES	534
WORKBENCHES	534 - 536
BACK WALL SYSTEMS	536
WALL CUPBOARDS	536
CLOAKROOM CUPBOARD	536
HINGED DOOR CABINET	536 - 537
BENCH VICES	537
HOOK ASSORTMENT	538 - 542
HOLE WALL	542 - 543
SERVICE TROLLEYS	543 - 544
PLATFORM TROLLEY	544
PLATFORM	544
SUPPORTS	545
TRANSPORT TROLLEY	545 - 546
PROTECTIVE KNEELING MATS	546
STOOLS	546
AXLE STANDS	547
LIFTING TOOLS	547
WORKSHOP EQUIPMENT	547

WORKSHOP EQUIPMENT



- Workbenches suitable for any requirement.
- Diverse program for an intelligent system and good overview.
- Many different combinations of drawers and doors.
- Different lengths from 600 mm to 2,000 mm. Fixed workbenches or workbenches with fixable rollers.
- All workbenches are made of sturdy folded sheet steel.
- Surfaces are treated with an environmentally friendly powder coating.
- Individual workplace design with many different combination possibilities.



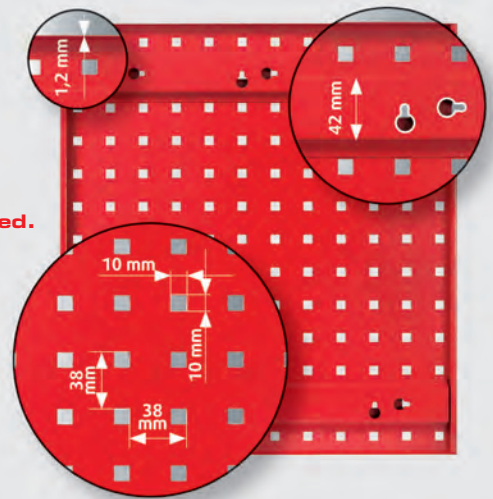
Perforated plates

10 standard colours,
4 different sizes

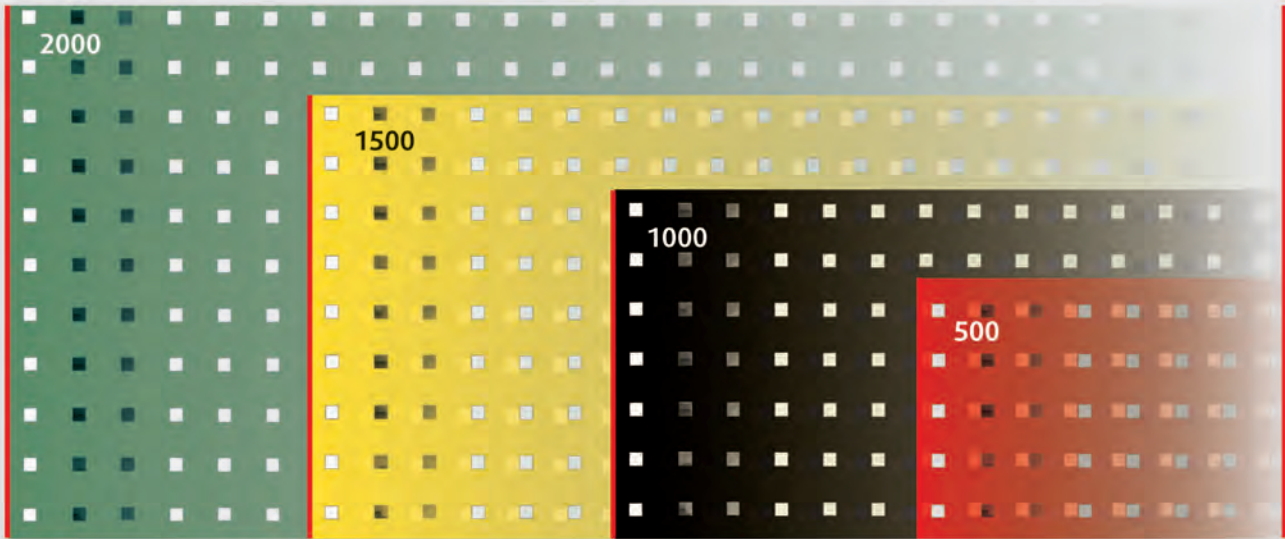
= 40 variations



Available in other colours as desired.



RAL5010 RAL5015 RAL5012 RAL7035 RAL9010 RAL6011 RAL7015 RAL9005 RAL1023 RAL3020



Range of hooks with other 80 different possibilities

Single hook



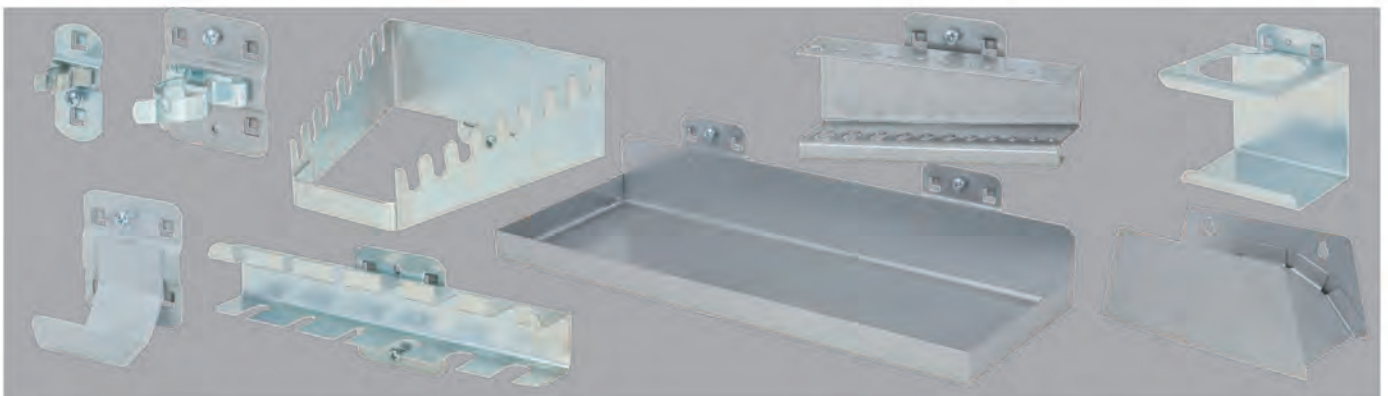
Double hook



Round holder



And much more...



WORKBENCHES

Mechanics workbench

- Mobile workbench ideally for vice work
- Foldable for transporting
- Laminated wooden work surface
- Waterproof and resistant to chemicals
- Metal protective edge
- High level of stability due to splayed table legs



	Total depth mm	Width mm	Depth mm	kg
914.1300	850.0	1070.0	620.0	40.00

Mechanics workbench

- Mobile workbench ideally for vice work
- Foldable for transporting
- Laminated wooden work surface
- Waterproof and resistant to chemicals
- Metal protective edge
- High level of stability due to splayed table legs



	Total depth mm	Width mm	Depth mm	kg
914.2000	850.0	1600.0	620.0	34.00

WORKBENCHES

Workbench

- Robust and stable steel construction with 1,0 mm sheet steel - distortion resistant
- High level of stability
- General construction from robust steel - square type tube
- Laminated wooden board
- Waterproof and resistant to chemicals
- With metal protective edge
- High stability due to all metal parts being welded
- Electrostatic powder coating



	Total depth mm	Width mm	Depth mm	kg
865.0013	840.0	1200.0	500.0	112.00

Workbench with 1 door

- Robust and stable steel construction with 1,0 mm sheet steel distortion resistant
- High level of stability
- General construction from robust steel square type tube
- Laminated wooden board
- Waterproof and resistant to chemicals
- Metal protective edge
- High stability due to all metal parts being welded
- Lockable door
- Electrostatic powder coating



	Total depth mm	Width mm	Depth mm	kg
865.0012	840.0	600.0	600.0	22.00



Workbench with 3 drawers

- Robust and stable steel construction with 1,0 mm sheet steel - distortion resistant
- High level of stability
- General construction from robust steel - square type tube
- Laminated wooden board
- Waterproof and resistant to chemicals
- With metal protective edge
- High stability due to all metal parts being welded
- Central locking system on all drawers through the cylinder lock
- Ball bearing drawer runners
- Drawers are 100% extendable
- Drawers with non-slip rubber mat
- Side mounted handle
- Electrostatic powder coating



	Total depth mm	Width mm	Depth mm	kg
865.0010	840.0	600.0	600.0	39.00

Workbench with 1 door

- Robust and stable steel construction with 1,0 mm sheet steel distortion resistant
- High level of stability
- General construction from robust steel square type tube
- Laminated wooden board
- Waterproof and resistant to chemicals
- Metal protective edge
- High stability due to all metal parts being welded
- Lockable door
- Electrostatic powder coating



Technical data:

Door dimensions: H 425 x B 430 x T 555 mm
Total load capacity: 400,0 kg

	Total depth mm	Width mm	Depth mm	kg
865.0001	840.0	1200.0	600.0	71.00

PROFI workbench with 2 doors

- Robust and stable steel construction with 1,0 mm sheet steel distortion resistant
- High level of stability
- General construction from robust steel square type tube
- Laminated wooden board
- Waterproof and resistant to chemicals
- Metal protective edge
- High stability due to all metal parts being welded
- Lockable door
- Electrostatic powder coating



Technical data:

Door dimensions: H 425 x B 430 x T 555 mm
Total load capacity: 400,0 kg

	Total depth mm	Width mm	Depth mm	kg
865.0002	850.0	1200.0	600.0	85.00



Workbench with 3 drawers and 1 door

- Robust and stable steel construction with 1,0 mm sheet steel distortion resistant
- High level of stability
- General construction from robust steel square type tube
- Laminated wooden board
- Waterproof and resistant to chemicals
- Metal protective edge
- High stability due to all metal parts being welded
- Lockable door
- Central locking system on all drawers through the cylinder lock
- Ball bearing drawer runners
- Drawers are 100% extendable
- Side mounted handle
- Electrostatic powder coating



Technical data:

Drawer dimensions: 2 x H 85 x B 430 x T 520 mm
1 x H 165 x B 430 x T 520 mm

Door dimensions: H 425 x B 430 x T 555 mm

Total load capacity: 400,0 kg

Load capacity of each drawer: 35,0 kg

	Total depth mm	Width mm	Depth mm	kg
865.0003	840.0	1200.0	600.0	86.00

Workbench with 6 drawers

- Robust and stable steel construction with 1,0 mm sheet steel - distortion resistant
- High level of stability
- General construction from robust steel - square type tube
- Laminated wooden board
- Waterproof and resistant to chemicals
- With metal protective edge
- High stability due to all metal parts being welded
- Central locking system on all drawers through the cylinder lock
- Ball bearing drawer runners
- Drawers are 100% extendable
- Drawers with non-slip rubber mat
- Side mounted handle
- Electrostatic powder coating



Technical data:

Drawer dimensions: 4 x H 85 x B 430 x T 520 mm
2 x H 165 x B 430 x T 520 mm

Total load capacity: 400,0 kg

Load capacity of each drawer: 35,0 kg

	Total depth mm	Width mm	Depth mm	kg
865.0004	840.0	1200.0	600.0	86.00

Mobile workbench with 3 drawers and 1 door

- Robust and stable steel construction with 1,0 mm sheet steel distortion resistant
- High level of stability
- General construction from robust steel square type tube
- Laminated wooden board
- Waterproof and resistant to chemicals
- Metal protective edge
- High stability due to all metal parts being welded
- Lockable door
- Central locking system on all drawers through the cylinder lock
- Ball bearing drawer runners
- Drawers are 100% extendable
- With two castor wheels 125 mm with rolling and turning brake
- Drawers with non slip rubber mat
- Side mounted handle
- Electrostatic powder coating



Technical data:

Drawer dimensions: 2 x H 85 x B 430 x T 520 mm
1 x H 165 x B 430 x T 520 mm

Door dimensions: H 425 x B 430 x T 555 mm

Total load capacity: 400,0 kg

Load capacity of each drawer: 35,0 kg

	Total depth mm	Width mm	Depth mm	kg
865.0101	840.0	1200.0	600.0	71.00

Workbench with 4 drawers and 1 door

- Robust and stable steel construction with 1,0 mm sheet steel distortion resistant
- High level of stability
- General construction from robust steel square type tube
- Laminated wooden board
- Waterproof and resistant to chemicals
- Metal protective edge
- High stability due to all metal parts being welded
- Lockable door
- Central locking system on all drawers through the cylinder lock
- Ball bearing drawer runners
- Drawers are 100% extendable
- Side mounted handle
- Electrostatic powder coating



	Total depth mm	Width mm	Depth mm	kg
865.0006	840.0	1200.0	500.0	95.00

Workbench with 8 drawers

- Robust and stable steel construction with 1,0 mm sheet steel - distortion resistant
- High level of stability
- General construction from robust steel - square type tube
- Laminated wooden board
- Waterproof and resistant to chemicals
- With metal protective edge
- High stability due to all metal parts being welded
- Central locking system on all drawers through the cylinder lock
- Ball bearing drawer runners
- Drawers are 100% extendable
- Side mounted handle
- Electrostatic powder coating



	Total depth mm	Width mm	Depth mm	kg
865.0007	840.0	1200.0	500.0	112.00

Mobile workbench with 6 drawers

- Robust and stable steel construction with 1,0 mm sheet steel distortion resistant
- High level of stability
- General construction from robust steel square type tube
- Laminated wooden board
- Waterproof and resistant to chemicals
- Metal protective edge
- High stability due to all metal parts being welded
- Lockable door
- Central locking system on all drawers through the cylinder lock
- Ball bearing drawer runners
- Drawers are 100% extendable
- With two castor wheels 200 mm with rolling and turning brake
- Drawers with non slip rubber mat
- Side mounted handle
- Electrostatic powder coating



	Total depth mm	Width mm	Depth mm	kg
865.0011	840.0	1200.0	600.0	108.00

XXL workbench with 3 drawers and 1 door

- Robust and stable steel construction with 1,0 mm sheet steel distortion resistant
- High level of stability
- General construction from robust steel square type tube
- Laminated wooden board
- Waterproof and resistant to chemicals
- Metal protective edge
- High stability due to all metal parts being welded
- Lockable door
- Central locking system on all drawers through the cylinder lock
- Ball bearing drawer runners
- Drawers are 100% extendable
- With two castor wheels 125 mm with rolling and turning brake
- Drawers with non slip rubber mat
- Side mounted handle
- Electrostatic powder coating



Technical data:

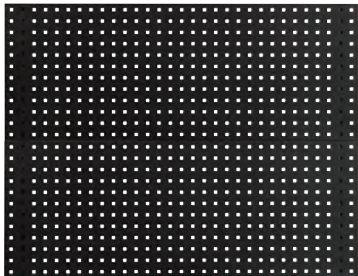
Drawer dimensions: 2 x H 85 x B 430 x T 520 mm
 1 x H 165 x B 430 x T 520 mm
 Door dimensions: H 425 x B 430 x T555 mm
 Total load capacity: 400,0 kg
 Load capacity of each drawer: 35,0 kg

	Total depth mm	Width mm	Depth mm	kg
865.0201	840.0	2000.0	680.0	86.00

BACK WALL SYSTEMS

Extension back wall system for workbenches

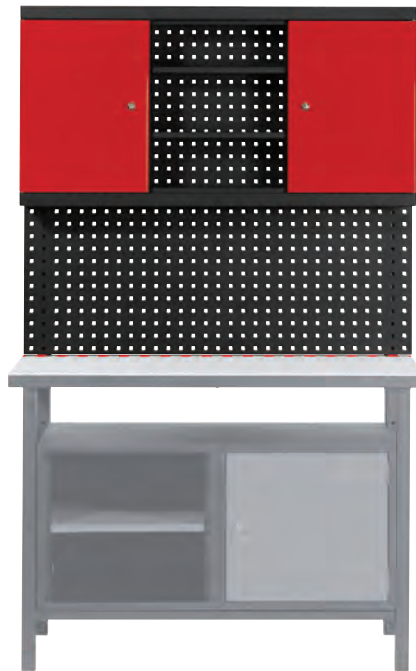
- 2 x posts
- 2 x hole wall
- For the accommodation of additional tools
- For organising and fastening tools
- Steel sheet construction



	Total depth mm	Width mm	Depth mm	kg
865.0008	710.0	1200.0	8.00	

Extension back wall system for workbenches with cupboard

- 2 x posts
- 1 x hole wall
- 1 x high level cupboard system, lockable
- For the accommodation of additional tools
- For organising and fastening tools
- Steel sheet construction

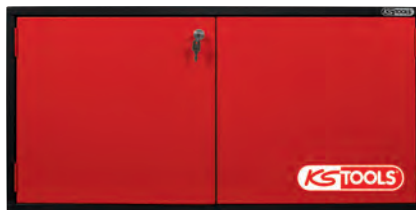


	Total depth mm	Width mm	Depth mm	kg
865.0009	710.0	1200.0	200.0	38.00

WALL CUPBOARDS

Tool cabinet with 2 doors

- Robust and stable steel construction with 1,0 mm sheet steel distortion resistant
- High level of stability
- Central locking system on all doors through the cylinder lock
- Cupboard back wall with hole system
- Suitable for hole measurements 10 x 10 mm hole distance 38 mm
- 2 mounting rails with 4 connection holes
- Continuous opening without stop
- Electrostatic powder coating



Technical data:

Door dimensions: H 425 x B 430 x T555 mm
 Usable depth: 164.0 mm

	Total depth mm	Width mm	Depth mm	kg
865.0205	200.0	970.0	470.0	22.00

CLOAKROOM CUPBOARD

Cloakroom stand

- Robust and stable steel construction with 1,0 mm sheet steel distortion resistant
- High level of stability
- Base and reinforced doors
- All parts have electrostatic powder coating
- Compartment with hat base, clothes rail and 3 adjustable coat hooks
- Lockable by cylinder lock



	Compartment	Total depth mm	Width mm	Depth mm	kg
850.0502	2	1800.0	600.0	500.0	26.00
850.0503	3	1800.0	890.0	500.0	35.00

HINGED DOOR CABINET

Lockable cupboard

- Robust and stable steel construction with 1,0 mm sheet steel distortion resistant
- High level of stability
- Central locking system on all drawers through the cylinder lock
- Ball bearing drawer runners
- Drawers are 100% extendable
- Front side edges are rounded
- Inside recumbent hinges and locking bar
- 4 shelves have universal height adjustment
- Internal storage wall with square punching, approx. 340 mm high
- Side mounted handle
- Electrostatic powder coating



Technical data:

Drawer dimensions: H 70 x B 680 x T 310 mm
 Total load capacity: 400,0 kg
 Load capacity of each drawer: 35,0 kg

	Total depth mm	Width mm	Depth mm	kg
865.0000	1920.0	780.0	380.0	84.00

Lockable cupboard

- High quality welded sheet metal
- High level of stability
- Reinforced doors with 3-point safety lock
- Inside-recumbent hinges and locking bar
- Galvanised shelves can be adjusted in 25 mm intervals
- Load capacity per shelf max. 60 kg with even load distribution
- Powder coated



	Total depth mm	Width mm	Depth mm	kg
865.0005	1950.0	950.0	500.0	80.00

BENCH VICES

Bench vice

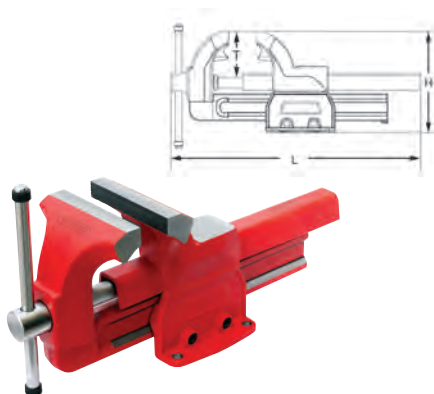
- Swivel base
- Interchangeable jaws
- Includes pipe vice attachment
- Absolutely parallel with adjustable centric drive
- Extra high possible clamping jaws shaped by large embossed casting
- Large anvil for straightening and compression work
- Induction hardened jaws and anvil
- Vise forward opening
- Ground jaws, anvil plate and slide corners
- Special steel



	Jaw length	Jaw length mm	Clamping range mm	kg
914.0003	3"	75.0	100,0	7.50
914.0004	4"	100.0	120,0	8.70
914.0005	5"	130.0	140,0	11.00
914.0006	6"	150.0	170,0	14.50
914.0008	8"	200.0	200,0	20.50

Bench vice

- With adjusting screw and pipe clamps
- Forged front and rear jaws
- Extra high possible clamping jaws shaped by large embossed casting
- Durable prismatic guide
- With mounting screws for turntable
- Induction hardened jaws and anvil
- Double start trapezoidal thread for quick opening and closing
- Vise forward opening
- Ground jaws, anvil plate and slide corners
- Special steel



	Jaw length mm	Clamping range mm	T mm	H mm	L mm	Clamped ø mm	kg
914.0026	100.0	125.0	70.0	140.0	320.0	12.0	5.00
914.0031	125.0	155.0	80.0	180.0	395.0	14.0	11.00
914.0036	150.0	180.0	98.0	220.0	485.0	16.0	20.00
914.0041	175.0	205.0	110.0	240.0	550.0	18.0	29.00

Turntable for bench vice

- Ideal supplement for KS-vices 914.0027 - 914.0041
- Enables accurate positioning of the workpiece
- 360° freely rotatable
- Safe and quick locking via handle
- Flat and stable construction
- Inclusive fastening screws for vice



		Ø mm	kg
914.0027	914.0026	100,0	1.40
914.0032	914.0031	125,0	2.80
914.0037	914.0036	150,0	3.75
914.0042	914.0041	175,0	4.85

Bench vice with turntable

- With adjusting screw and pipe clamps
- Forged front and rear jaws
- Extra high possible clamping jaws shaped by large embossed casting
- Durable prismatic guide
- With mounting screws for turntable
- Induction hardened jaws and anvil
- Double start trapezoidal thread for quick opening and closing
- Vise forward opening
- Ground jaws, anvil plate and slide corners
- Special steel



	Jaw length mm	kg	
914.0025	2 pcs	100.0	6.40
914.0030	2 pcs	125.0	13.80
914.0035	2 pcs	150.0	23.75
914.0040	2 pcs	175.0	33.85

Aluminium bench vice protective jaws with textured surface

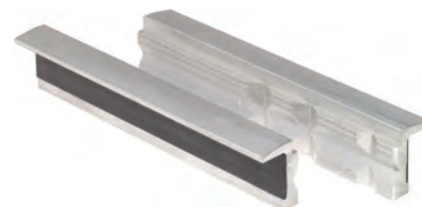
- Suitable for all bench vices
- The profile is right angled and level parallel
- Integrated special magnet hold the protective jaws safely on the vice
- For material protection and non slip grip on sensitive materials
- For coarse to medium fine work pieces
- Fine textured
- Aluminium



	Protective jaws mm	kg
914.0080	100.0	170
914.0081	120.0	210
914.0082	140.0	240
914.0083	160.0	270
914.0084	175.0	290

Aluminium bench vice protective jaws with trapezoid notches

- Suitable for all bench vices
- The profile is right angled and level parallel
- Integrated special magnet hold the protective jaws safely on the vice
- For material protection and non slip grip on sensitive materials
- For different shaped materials
- For trapezoid use
- Aluminium



	Protective jaws mm	kg
914.0085	100.0	140
914.0086	120.0	190
914.0087	140.0	210
914.0088	160.0	240
914.0089	175.0	260

Aluminium bench vice protective jaws with rubber insert

- Suitable for all bench vices
- The profile is right angled and level parallel
- Integrated special magnet hold the protective jaws safely on the vice
- For material protection and non slip grip on sensitive materials
- For thin walled wood and plastic parts
- Smooth
- Aluminium / rubber

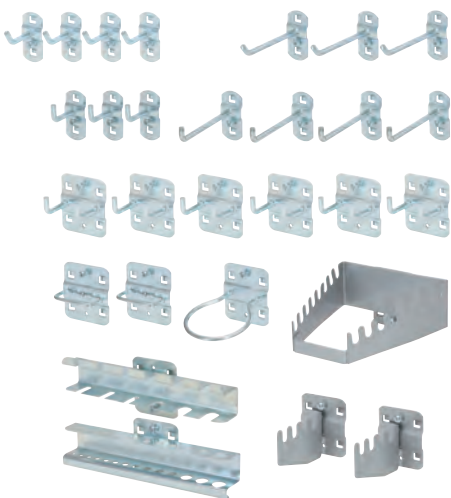


	Protective jaws mm	kg
914.0090	100.0	160
914.0091	120.0	200
914.0092	140.0	240
914.0093	140.0	260
914.0094	175.0	290

HOOK ASSORTMENT

Hook assortment for hole wall system

- Peg range for work areas
- Suitable for hole measurements 10 x 10 mm hole distance 38 mm
- Includes fixing screws
- Baseplate thickness 1,5 mm
- Zinc coated
- Sheet steel



		Hook assortment for hole wall system		kg
860.0888	28 pcs			1.78
1 x		150 x 55 mm		
1 x		65 x 25 mm		
2 x		55 mm		
2 x		150 mm		
1 x		150 x 55 mm		
1 x		150 x 55 mm		
14 x		3 x 35 mm - 4 x 50 mm - 4 x 75 mm 3 x 100 mm		
6 x		35 mm		



Tool holder with straight end Ø 6 mm

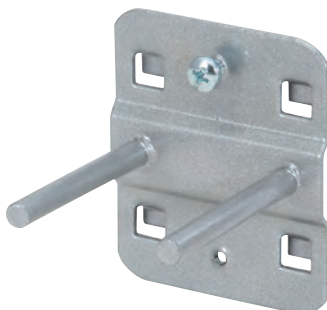
- Suitable for hole measurements 10 x 10 mm hole distance 38 mm
- Includes fixing screws
- Baseplate thickness 1,5 mm
- Zinc coated
- Sheet steel



	Ø mm	L mm	kg
860.0801	6,0	50,0	30
860.0802	6,0	100,0	40
860.0803	6,0	150,0	40

Double tool holder with straight end Ø 6 mm

- Suitable for hole measurements 10 x 10 mm hole distance 38 mm
- Includes fixing screws
- Baseplate thickness 1,5 mm
- Zinc coated
- Sheet steel



	Ø mm	L mm	kg
860.0820	6,0	35,0	60
860.0821	6,0	50,0	80
860.0822	6,0	75,0	110

Tool holder with angled hook end Ø 6 mm

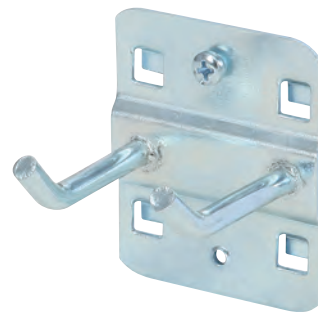
- Suitable for hole measurements 10 x 10 mm hole distance 38 mm
- Includes fixing screws
- Baseplate thickness 1,5 mm
- Zinc coated
- Sheet steel



	Ø mm	L mm	kg
860.0804	6,0	50,0	30
860.0805	6,0	100,0	40
860.0806	6,0	150,0	50
860.0807	6,0	200,0	60

Double tool holder with angled hook end Ø 6 mm

- Suitable for hole measurements 10 x 10 mm hole distance 38 mm
- Includes fixing screws
- Baseplate thickness 1,5 mm
- Zinc coated
- Sheet steel



	Ø mm	L mm	kg
860.0812	6,0	35,0	60
860.0813	6,0	50,0	60
860.0814	6,0	75,0	80
860.0815	6,0	150,0	110

Tool holder with vertical hook end Ø 6 mm

- Suitable for hole measurements 10 x 10 mm hole distance 38 mm
- Includes fixing screws
- Baseplate thickness 1,5 mm
- Zinc coated
- Sheet steel



	Ø mm	L mm	kg
860.0809	6,0	35,0	30
860.0810	6,0	75,0	40
860.0811	6,0	125,0	90

Double tool holder with vertical hook end Ø 6 mm

- Suitable for hole measurements 10 x 10 mm hole distance 38 mm
- Includes fixing screws
- Baseplate thickness 1,5 mm
- Zinc coated
- Sheet steel



	Ø mm	L mm	kg
860.0816	6,0	35,0	60
860.0817	6,0	50,0	70
860.0818	6,0	75,0	90
860.0819	6,0	150,0	100

Tool clip, single small

- Suitable for hole measurements 10 x 10 mm hole distance 38 mm
- Includes fixing screws
- Baseplate thickness 1,5 mm
- Zinc coated
- Sheet steel



	Ø mm	g
860.0824	6,0	20
860.0825	10,0	20
860.0826	13,0	20
860.0827	16,0	20
860.0828	19,0	20

Angled hook for nuts and sockets Ø 6 mm

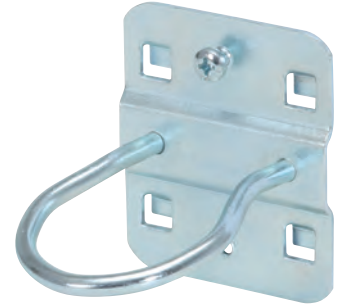
- Suitable for hole measurements 10 x 10 mm hole distance 38 mm
- Includes fixing screws
- Baseplate thickness 1,5 mm
- Zinc coated
- Sheet steel



	Ø mm	L mm	g
860.0823	6,0	40,0	30

Power tool holder

- Suitable for hole measurements 10 x 10 mm hole distance 38 mm
- Includes fixing screws
- Baseplate thickness 1,5 mm
- Zinc coated
- Sheet steel



	Ø mm	g
860.0841	40,0	50
860.0842	60,0	70
860.0843	80,0	80

Tool clip, double small

- Suitable for hole measurements 10 x 10 mm hole distance 38 mm
- Includes fixing screws
- Baseplate thickness 1,5 mm
- Zinc coated
- Sheet steel



	Ø mm	g
860.0829	6,0	40
860.0830	10,0	40
860.0831	13,0	40
860.0832	16,0	40
860.0833	19,0	50

Plier holder depth 20 mm

- Suitable for hole measurements 10 x 10 mm hole distance 38 mm
- Includes fixing screws
- Baseplate thickness 1,5 mm
- Zinc coated
- Sheet steel



	Ø mm	g
860.0837	35,0	60
860.0838	55,0	50
860.0839	75,0	60

Tool holder 3 way

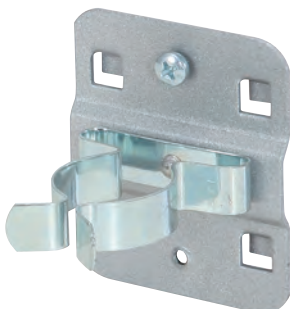
- Suitable for hole measurements 10 x 10 mm hole distance 38 mm
- Includes fixing screws
- Baseplate thickness 1,5 mm
- Zinc coated
- Sheet steel



	Ø mm	L mm	g
860.0844	6,0	150,0	150

Tool clip, single large

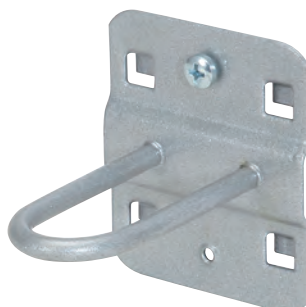
- Suitable for hole measurements 10 x 10 mm hole distance 38 mm
- Includes fixing screws
- Baseplate thickness 1,5 mm
- Zinc coated
- Sheet steel



	Ø mm	g
860.0834	25,0	50
860.0835	28,0	50
860.0836	32,0	50

Round holder

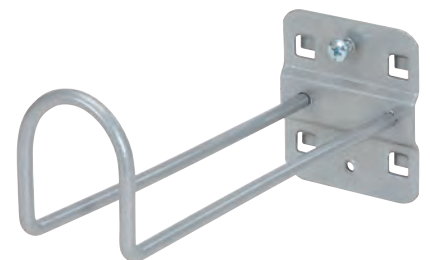
- Suitable for hole measurements 10 x 10 mm hole distance 38 mm
- Includes fixing screws
- Baseplate thickness 1,5 mm
- Zinc coated
- Sheet steel



	L mm	B mm	g
860.0840	65,0	25,0	70

Cable holder

- Suitable for hole measurements 10 x 10 mm hole distance 38 mm
- Includes fixing screws
- Baseplate thickness 1,5 mm
- Zinc coated
- Sheet steel

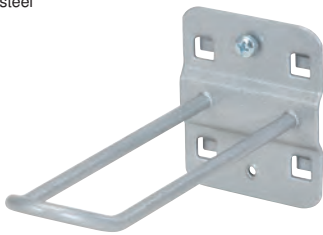


	L mm	B mm	H mm	g
860.0874	150,0	37,0	50,0	110
860.0875	200,0	37,0	50,0	120

1
2
3
4
5
6
7
8
9
10
11
12
13
14
15
16
17
18
19
20
21
22
23
24
25
26
27
i

Tool holder for euro blister packaging

- Suitable for hole measurements 10 x 10 mm hole distance 38 mm
- Includes fixing screws
- Baseplate thickness 1,5 mm
- Zinc coated
- Sheet steel



	L mm	B mm	g
860.0876	125.0	30.0	80
860.0877	150.0	30.0	90

Screwdriver holder

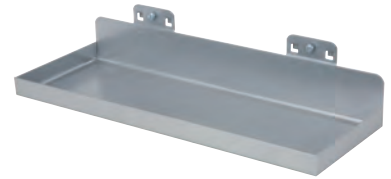
- Suitable for hole measurements 10 x 10 mm hole distance 38 mm
- Includes fixing screws
- Baseplate thickness 1,5 mm
- Zinc coated
- Sheet steel



	No. holes	L mm	B mm	g
860.0850	6	150.0	55.0	170
860.0851	12	150.0	55.0	320

Storage shelf without partition

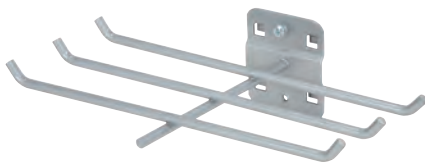
- Suitable for hole measurements 10 x 10 mm hole distance 38 mm
- Includes fixing screws
- Baseplate thickness 1,5 mm
- Zinc coated
- Sheet steel



	L mm	B mm	g
860.0857	350.0	125.0	1.10
860.0858	450.0	150.0	1.50

Six way tool holder hook ends 45° angled

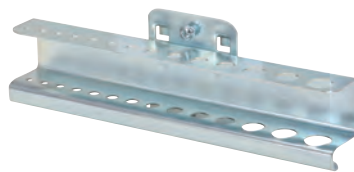
- Suitable for hole measurements 10 x 10 mm hole distance 38 mm
- Includes fixing screws
- Baseplate thickness 1,5 mm
- Zinc coated
- Sheet steel



	Ø mm	L mm	B mm	g
860.0845	6,0	240.0	140.0	240

Drill- and hexagon socket holder

- Suitable for hole measurements 10 x 10 mm hole distance 38 mm
- Includes fixing screws
- Baseplate thickness 1,5 mm
- Zinc coated
- Sheet steel



	No. holes	L mm	B mm	g
860.0852	14	150.0	55.0	200
860.0853	28	150.0	55.0	550

Lin bin holder single

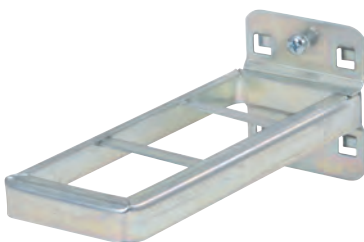
- For size 7 and 8
- Suitable for hole measurements 10 x 10 mm hole distance 38 mm
- Includes fixing screws
- Baseplate thickness 1,5 mm
- Zinc coated
- Sheet steel



		g
860.0859	Lin bin holder single	60

Combination holder

- Suitable for hole measurements 10 x 10 mm hole distance 38 mm
- Includes fixing screws
- Baseplate thickness 1,5 mm
- Zinc coated
- Sheet steel



	L mm	B mm	g
860.0846	150.0	55.0	110

Saw holder

- To be used in pairs
- Suitable for hole measurements 10 x 10 mm hole distance 38 mm
- Includes fixing screws
- Baseplate thickness 1,5 mm
- Zinc coated
- Sheet steel



	No. holes	L mm	g
860.0854	4	150.0	70

Base plate

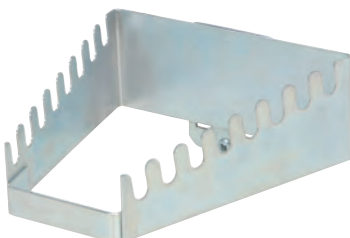
- Suitable for hole measurements 10 x 10 mm hole distance 38 mm
- Includes fixing screws
- Baseplate thickness 1,5 mm
- Zinc coated
- Sheet steel



		g
860.0860	Base plate	20
860.0861	Base plate	40

Spanner holder horizontal

- Suitable for hole measurements 10 x 10 mm hole distance 38 mm
- Includes fixing screws
- Baseplate thickness 1,5 mm
- Zinc coated
- Sheet steel



	No. holes	L mm	B mm	g
860.0849	8	150.0	55.0	200

Pipe holder

- To be used in pairs
- Suitable for hole measurements 10 x 10 mm hole distance 38 mm
- Includes fixing screws
- Baseplate thickness 1,5 mm
- Zinc coated
- Sheet steel



	Ø mm	B mm	g
860.0855	60,0	35,0	100
860.0856	100,0	35,0	150

Lin bin holder

- Suitable for hole measurements 10 x 10 mm hole distance 38 mm
- Includes fixing screws
- Baseplate thickness 1,5 mm
- Zinc coated
- Sheet steel



	B mm	H mm	g
860.0862	550.0	40.0	520
860.0863	550.0	60.0	660

Spanner holder tapered for 10 spanners

- Suitable for hole measurements 10 x 10 mm hole distance 38 mm
- Includes fixing screws
- Baseplate thickness 1,5 mm
- Zinc coated
- Sheet steel



	No. holes	L mm	B mm	H mm	kg
860.0864	5	145/75,0	50,0	220,0	310
860.0865	5	225/125,0	50,0	255,0	480

Can holder

- Suitable for hole measurements 10 x 10 mm hole distance 38 mm
- Includes fixing screws
- Baseplate thickness 1,5 mm
- Zinc coated
- Sheet steel



	No. holes	Ø mm	L mm	kg
860.0866	1	70,0	100,0	170
860.0867	3	70,0	300,0	580

Pipe holder

- Suitable for hole measurements 10 x 10 mm hole distance 38 mm
- Includes fixing screws
- Baseplate thickness 1,5 mm
- Zinc coated
- Sheet steel



	L mm	B mm	kg
860.0868	230,0	70,0	700

Small component tray with partition

- Suitable for hole measurements 10 x 10 mm hole distance 38 mm
- Includes fixing screws
- Baseplate thickness 1,5 mm
- Zinc coated
- Sheet steel



	L mm	B mm	kg
860.0847	150,0	55,0	240

Small component tray without partition

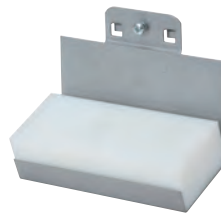
- Suitable for hole measurements 10 x 10 mm hole distance 38 mm
- Includes fixing screws
- Baseplate thickness 1,5 mm
- Zinc coated
- Sheet steel



	L mm	B mm	kg
860.0848	150,0	55,0	210

Universal tool holder self drill

- With plastic pad for DIY drilling
- Suitable for hole measurements 10 x 10 mm hole distance 38 mm
- Includes fixing screws
- Baseplate thickness 1,5 mm
- Zinc coated
- Sheet steel



	L mm	B mm	kg
860.0869	70,0	120,0	340
860.0870	45,0	390,0	1030

Universal tool storage box

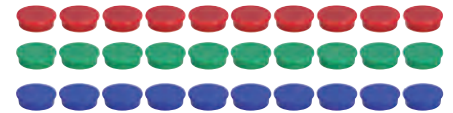
- With wooden insert for DIY drilling
- Suitable for hole measurements 10 x 10 mm hole distance 38 mm
- Includes fixing screws
- Baseplate thickness 1,5 mm
- Zinc coated
- Sheet steel



	L mm	B mm	H mm	kg
860.0871	155,0	120,0	55,0	1,25

Magnet set

- Different colours
- Ideally suited for metal surfaces
- Plastic coated magnet



	Colour code	Ø mm	kg
860.0882	●	25,0	90
860.0883	●	25,0	90
860.0884	●	25,0	100

Sheet steel tray

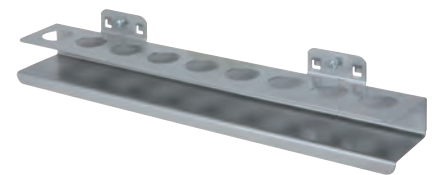
- Suitable for hole measurements 10 x 10 mm hole distance 38 mm
- Includes fixing screws
- Baseplate thickness 1,5 mm
- Zinc coated
- Sheet steel



	L mm	B mm	kg
860.0878	250,0	435,0	1390

Socket holder

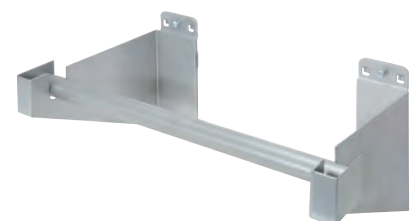
- Suitable for hole measurements 10 x 10 mm hole distance 38 mm
- Includes fixing screws
- Baseplate thickness 1,5 mm
- Zinc coated
- Sheet steel



	No. holes	B mm	H mm	kg
860.0873	9	390,0	30,0	150

Paper roll holder

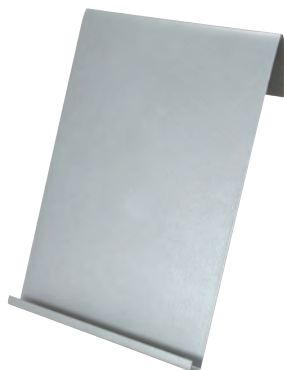
- Suitable for hole measurements 10 x 10 mm hole distance 38 mm
- Includes fixing screws
- Baseplate thickness 1,5 mm
- Zinc coated
- Sheet steel



	L mm	B mm	H mm	kg
860.0879	100,0	355,0	120,0	710

Document holder

- Suitable for hole measurements 10 x 10 mm hole distance 38 mm
- Includes fixing screws
- Baseplate thickness 1,5 mm
- Zinc coated
- Sheet steel



	B mm	H mm	
860.0880	220.0	310.0	750

Works order holder

- Suitable for hole measurements 10 x 10 mm hole distance 38 mm
- Includes fixing screws
- Baseplate thickness 1.5 mm
- Zinc coated
- Sheet steel



	B mm	H mm	
860.0881	220.0	310.0	690

Magnetic holder

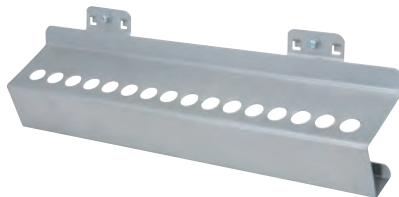
- Suitable for hole measurements 10 x 10 mm hole distance 38 mm
- Includes fixing screws
- Baseplate thickness 1.5 mm
- Zinc coated
- Sheet steel



	Ø mm	
860.0885	40,0	150

Drill holder for MK 2 and MK 3 shafts

- Suitable for hole measurements 10 x 10 mm hole distance 38 mm
- Includes fixing screws
- Baseplate thickness 1,5 mm
- Zinc coated
- Sheet steel



	No. holes	B mm	H mm	
860.0886	16	395.0	85.0	570

Bit holder

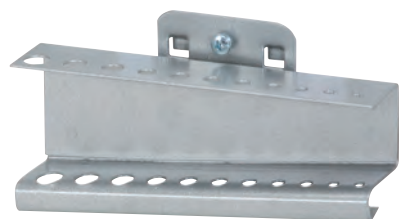
- Suitable for hole measurements 10 x 10 mm hole distance 38 mm
- Includes fixing screws
- Baseplate thickness 1.5 mm
- Zinc coated
- Sheet steel



	No. holes	L mm	B mm	
860.0887	7	35.0	150.0	150

Hexagon socket holder

- Suitable for hole measurements 10 x 10 mm hole distance 38 mm
- Includes fixing screws
- For Ø 1 - 11 mm
- Baseplate thickness 1.5 mm
- Zinc coated
- Sheet steel



	No. holes	B mm	H mm	
860.0872	11	145.0	70.0	190

Socket holder for 1/2" sockets

- Suitable for hole measurements 10 x 10 mm hole distance 38 mm
- Includes fixing screws
- Baseplate thickness 1.5 mm
- Zinc coated
- Sheet steel

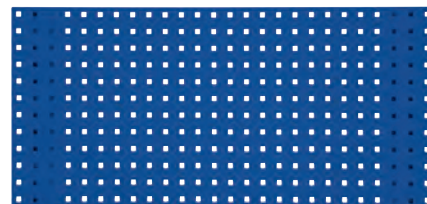


	No. holes	
860.0894	6	200
860.0895	13	360

HOLE WALL

Hole wall gentian blue

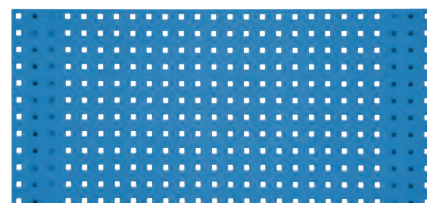
- Versatile and practical
- 1,25 mm thick steel sheet
- Beveled all around
- Impact and scratch resistant plastic coating
- Electrostatic powder coating



	RAL	L mm	B mm	
860.0889EB	5010	500.0	450.0	2.00
860.0890EB	5010	1000.0	450.0	5.00
860.0891EB	5010	1500.0	450.0	7.00
860.0892EB	5010	2000.0	450.0	9.00

Hole wall sky blue

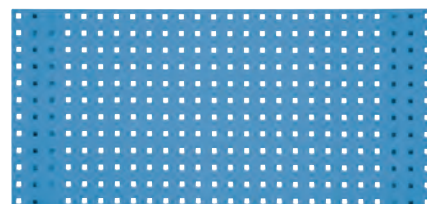
- Versatile and practical
- 1,25 mm thick steel sheet
- Beveled all around
- Impact and scratch resistant plastic coating
- Electrostatic powder coating



	RAL	L mm	B mm	
860.0889HB	5015	500.0	450.0	2.00
860.0890HB	5015	1000.0	450.0	5.00
860.0891HB	5015	1500.0	450.0	7.00
860.0892HB	5015	2000.0	450.0	9.00

Hole wall light blue

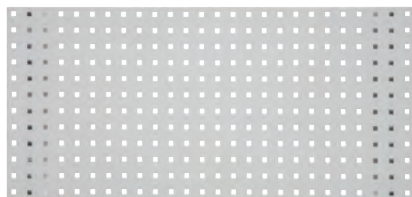
- Versatile and practical
- 1,25 mm thick steel sheet
- Beveled all around
- Impact and scratch resistant plastic coating
- Electrostatic powder coating



	RAL	L mm	B mm	
860.0889LB	5012	500.0	450.0	2.00
860.0890LB	5012	1000.0	450.0	5.00
860.0891LB	5012	1500.0	450.0	7.00
860.0892LB	5012	2000.0	450.0	9.00

Hole wall light grey

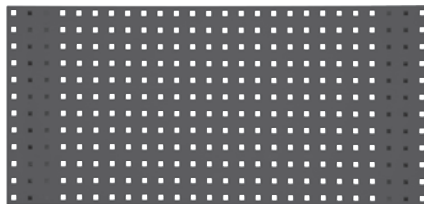
- Versatile and practical
- 1,25 mm thick steel sheet
- Beveled all around
- Impact and scratch resistant plastic coating
- Electrostatic powder coating



	RAL	L mm	B mm	kg
860.0889LG	7035	500.0	450.0	2.00
860.0890LG	7035	1000.0	450.0	5.00
860.0891LG	7035	1500.0	450.0	7.00
860.0892LG	7035	2000.0	450.0	9.00

Hole wall slate grey

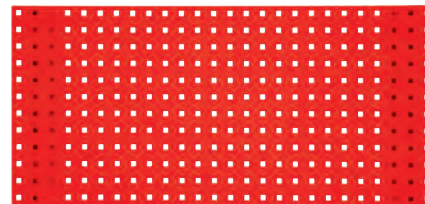
- Versatile and practical
- 1,25 mm thick steel sheet
- Beveled all around
- Impact and scratch resistant plastic coating
- Electrostatic powder coating



	RAL	L mm	B mm	kg
860.0889SG	7015	500.0	450.0	2.00
860.0890SG	7015	1000.0	450.0	5.00
860.0891SG	7015	1500.0	450.0	7.00
860.0892SG	7015	2000.0	450.0	9.00

Hole wall bright red

- Versatile and practical
- 1,25 mm thick steel sheet
- Beveled all around
- Impact and scratch resistant plastic coating
- Electrostatic powder coating



	RAL	L mm	B mm	kg
860.0889VR	3020	500.0	450.0	2.00
860.0890VR	3020	1000.0	450.0	5.00
860.0891VR	3020	1500.0	450.0	7.00
860.0892VR	3020	2000.0	450.0	9.00

Hole wall pure white

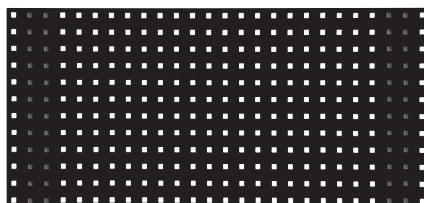
- Versatile and practical
- 1,25 mm thick steel sheet
- Beveled all around
- Impact and scratch resistant plastic coating
- Electrostatic powder coating



	RAL	L mm	B mm	kg
860.0889RW	9010	500.0	450.0	2.00
860.0890RW	9010	1000.0	450.0	5.00
860.0891RW	9010	1500.0	450.0	7.00
860.0892RW	9010	2000.0	450.0	9.00

Hole wall jet black

- Versatile and practical
- 1,25 mm thick steel sheet
- Beveled all around
- Impact and scratch resistant plastic coating
- Electrostatic powder coating



	RAL	L mm	B mm	kg
860.0889TS	9005	500.0	450.0	2.00
860.0890TS	9005	1000.0	450.0	5.00
860.0891TS	9005	1500.0	450.0	7.00
860.0892TS	9005	2000.0	450.0	9.00

SERVICE TROLLEYS

Workshop service trolley

- Made from robust sheet steel construction
- Non slip foam insert on the upper working surface
- Lower shelf with high retaining border
- 2 castor wheels 100 mm
- 2 castor wheels with brake 100 mm
- High level of stability



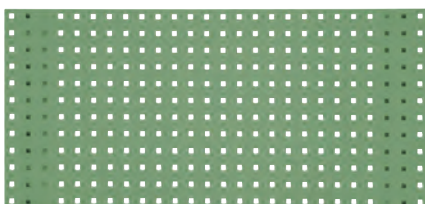
Technical data:

Total load capacity: 200 kg

	L mm	B mm	H mm	kg
890.0002	697.0	489.0	836.0	19.10

Hole wall reseda green

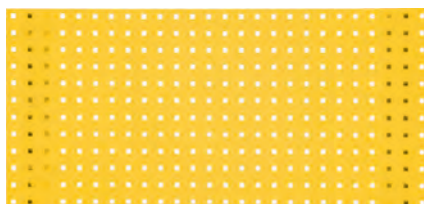
- Versatile and practical
- 1,25 mm thick steel sheet
- Beveled all around
- Impact and scratch resistant plastic coating
- Electrostatic powder coating



	RAL	L mm	B mm	kg
860.0889RG	6011	500.0	450.0	2.00
860.0890RG	6011	1000.0	450.0	5.00
860.0891RG	6011	1500.0	450.0	7.00
860.0892RG	6011	2000.0	450.0	9.00

Hole wall bright gold

- Versatile and practical
- 1,25 mm thick steel sheet
- Beveled all around
- Impact and scratch resistant plastic coating
- Electrostatic powder coating



	RAL	L mm	B mm	kg
860.0889VG	1023	500.0	450.0	2.00
860.0890VG	1023	1000.0	450.0	5.00
860.0891VG	1023	1500.0	450.0	7.00
860.0892VG	1023	2000.0	450.0	9.00

Workshop service trolley

- Extremely substantial plastic construction
- Without screws easily constructed
- Distance between the ground 30 cm
- 2 castor wheels 100 mm
- 2 castor wheels with brake 100 mm
- High level of stability
- Light profile weight
- Columns made out of anodised aluminum



Technical data:

Total load capacity: 200 kg

	L mm	B mm	H mm	kg
800.0020	860.0	480.0	1010.0	12.10

Workshop service trolley with lining

- Extremely substantial plastic construction
- Equipment lining
- Without screws easily constructed
- Distance between the ground 30 cm
- 2 castor wheels 100 mm
- 2 castor wheels with brake 100 mm
- High level of stability
- Light profile weight
- Columns made out of anodised aluminum



Technical data:

Total load capacity: 200 kg

	L mm	B mm	H mm	kg
800.0021	860.0	480.0	1010.0	12.10

Workshop service trolley with 2 drawers

- Extremely robust plastic construction
- Easily constructed without screws
- Two ball bearing drawer runner guides
- 2 castor wheels 100 mm
- 2 castor wheels with brake 100 mm
- High level of stability
- Light profile weight
- Columns made out of anodised aluminum



Technical data:

Drawer dimensions: H 85 x B 430 x T 520 mm
 Total load capacity: 200 kg
 Load capacity of each drawer: 35 kg

	L mm	B mm	H mm	kg
800.0030	860.0	480.0	1010.0	14.20

Workshop service trolley with 2 drawers and lining

- Extremely substantial plastic construction
- Without screws easily constructed
- Two ball bearing drawer runner guides
- 2 castor wheels 100 mm
- 2 castor wheels with brake 100 mm
- High level of stability
- Light profile weight
- Columns made out of anodised aluminum



Technical data:

Drawer dimensions: H 85 x B 430 x T 520 mm
 Total load capacity: 200 kg
 Load capacity of each drawer: 35 kg

	L mm	B mm	H mm	kg
800.0031	860.0	480.0	1010.0	15.00

PLATFORM TROLLEY

Platform trolley for stores and workshops

- Solid construction of steel sheet
- Firmly fixed grasping handle made from steel tube
- Grasping handle is hinged and locked with safety security catches without any tools
- In minimal time
- Rubber surrounding edges protect the trolley and surroundings from damage
- For ball bearing rubber wheels
- Load area has a plastic covering



Technical data:

Wheel diameter: 100 mm
 Total load capacity: 150 kg

	L mm	B mm	H mm	kg
800.0015	740.0	480.0	810.0	9.20

PLATFORM

Aluminium work platform

- Skid proof profile on the platform stage
- Chequer plate profile on the steps
- Double sided usage
- Large platform for safe standing
- Safety clips for added security
- Beams and step made from aluminium
- Easy to store as the unit is fully collapsible
- The gripped plastic feet protect the surface and add stability
- Substantial aluminium construction



Technical data:

Platform dimensions: 1000 x 300 mm
 Total load capacity: 150 kg

	L mm	B mm	H mm	kg
800.0960	1345.0	405.0	480.0	7.40



Safety assembly step

- No tipping over through obliquely placed standing feet
- Anti slip, hot dip galvanised, with the frame riveted lattice rustproof
- Step to DIN 50976
- Massive and distortion stiff steel tube construction
- Base frame plastic coated
- The gripped plastic feet protect the surface and add stability
- Applicable e.g. panel assembly, engine compartment works, roof works truck pit working
- Universal suitable in very high vehicles e.g.: motor homes, small vehicles, truck and buses, terrain vehicles



Technical data:

Height 2nd step: 450.0 mm
 Surface area: 690 x 620 mm
 Steel grating: 590 x 290 mm
 Total load capacity: 300 kg

		kg
450.0960	Safety assembly step	14.00

SUPPORTS

Windscreen table with rubber protective pads

- Fully adjustably
- The four large rubber pads hold the windscreen safely in position
- For nearly all windscreen sizes
- Capacity up to 60 kg
- Made from blue laquered steel tube



	L mm	H mm	Suction cup Ø mm	kg
140.2225	1160.0	1070.0	140.0	10.35



Windscreen holder

- Fully adjustably
- For nearly all windscreen sizes
- Robust construction
- Capacity up to 80 kg
- Slip proof holding bar offer optimal hold
- Made from red powder coating steel tube



	L mm	H mm	kg
140.2226	790.0	1060.0	7.70

Universal telescopic multi purpose trolley

- Ideally for the car body restoration, panel spraying area or for windshields
- Universal application the all rounder both height and width adjustable
- After use space saving folding away
- Rubber underside to prevent damage to the paintwork and other panels
- 4 substantial wheels, 2 with locking brakes
- Simple handling
- Capacity up to 100 kg
- Robust construction made from square tube



	B mm	H mm	kg
500.8100	257.0-1380.0	845.0-1320.0	23.50

TRANSPORT TROLLEY

Telescopic sack trolley with pneumatic wheels

- Steel tubular structure with deep welded joints
- Light and agile transportation for use in smallest space
- Effortless receiving and transporting of packages, carton and all other objects
- From round tubes welded together manufactured and solid
- Fold away shovel base
- High quality telescopic pole
- Equipped with 2 fixed wheels with pneumatic tyres
- Safety handles and slip protection
- Perfectly suitable in industry and business



Technical data:
 Tyre size: Ø 260 x 80 mm
 Shovel/base dimensions: B 300 x T 350 mm
 Min. dimensions: 810.0 mm
 Max. dimensions: 1140.0 mm

	Max load kg	L mm	B mm	H mm	kg
160.0224	200.0 kg	630.0	480.0	1140.0	10.00

Transport sack trolley with pneumatic wheels

- Steel tubular structure with deep welded joints
- Light and agile transportation for use in smallest space
- Effortless receiving and transporting of packages, carton and all other objects
- From round tubes welded together manufactured and solid
- Very wide shovel base
- Equipped with 2 fixed wheels with pneumatic tyres
- Safety handles and slip protection
- Perfectly suitable in industry and business



Technical data:
 Tyre size: Ø 260 x 85 mm
 Shovel/base dimensions: B 170 x T 420 mm

	Max load kg	L mm	B mm	H mm	kg
160.0225	300.0 kg	620.0	420.0	1100.0	10.00

Transport sack trolley with full rubber tyres

- Steel tubular structure with deep welded joints
- Light and agile transportation for use in smallest space
- Effortless receiving and transporting of packages, carton and all other objects
- From round tubes welded together manufactured and solid
- Equipped with 2 fixed full rubber wheels
- Safety handles and slip protection
- Perfectly suitable in industry and business



Technical data:
 Tyre size: Ø 255 x 46 mm
 Shovel/base dimensions: B 170 x T 400 mm

	Max load kg	L mm	B mm	H mm	kg
160.0228	250.0 kg	530.0	400.0	1100.0	17.00

Transport sack trolley with pneumatic wheels

- Steel tubular structure with deep welded joints
- Light and agile transportation for use in smallest space
- Effortless receiving and transporting of packages, carton and all other objects
- From round tubes welded together manufactured and solid
- Fold away shovel base
- Equipped with 2 fixed wheels with pneumatic tyres
- Safety handles and slip protection
- Perfectly suitable in industry and business



Technical data:

Tyre size: Ø 260 x 85 mm
Shovel/base dimensions: B 340 x T 520 mm

	Max load kg	L mm	B mm	H mm	
160.0226	250.0 kg	620.0	400.0	1100.0	10.00

Transport trolley with full rubber tyres

- Steel tubular structure with deep welded joints
- Light and agile transportation for use in smallest space
- Effortless receiving and transporting of packages, carton and all other objects
- From round tubes welded together manufactured and solid
- Fold away shovel base
- Equipped with 2 fixed full rubber wheels
- Safety handles and slip protection
- Perfectly suitable in industry and business



Technical data:

Tyre size: Ø 255 x 46 mm
Shovel/base dimensions: B 340 x T 520 mm

	Max load kg	L mm	B mm	H mm	
160.0229	250.0 kg	620.0	400.0	1100.0	19.00

Sack trolley with full rubber three staged wheels

- Steel tubular structure with deep welded joints
- Light and agile transportation for use in smallest space
- Effortless receiving and transporting of packages, cartons and all other objects
- From round tubes welded together manufactured and solid
- Fold away shovel base
- Problem free overcoming of stairs
- Full rubber three staged wheels
- Perfectly suitable in industry and business



Technical data:

Tyre size: Ø 160 x 30 mm
Shovel/base dimensions: B 340 x T 520 mm

	Max load kg	L mm	B mm	H mm	
160.0227	250.0 kg	850.0	715.0	1610.0	15.00



PROTECTIVE KNEELING MATS

Mechanics protection mat

- Helps the mechanic to work easier and safer whilst working in the lower area of vehicles on uneven surfaces
- Moisture and dirt resistant
- Work garments and knees stay dry, clean and protected
- 3 layered padded construction from soft material
- Integrated hand grip
- Petrol and oil resistant
- Universal use in workshops, service and breakdown service vehicles



	L mm	B mm	H mm	
500.8040	480.0	320.0	36.0	200
500.8045	1220.0	550.0	36.0	760



STOOLS

Mobile workshop stool

- Robust and mobile stool
- Storage area for the protection of tools and small parts
- Washable cushion
- Four ball bearing solid rubber wheels
- Maximum capacity up to 120 kg
- Construction from robust steel square tube



	L mm	B mm	H mm	
500.8020	440.0	360.0	360.0	4.00

Mobile and height adjustable workshop stool

- Robust and mobile stool
- Storage area for the protection of tools and small parts
- Washable cushion
- Hydraulic height adjustment
- Five ball bearing solid rubber wheels
- Maximum capacity up to 120 kg
- Durable metal construction



	B mm	H mm	
500.8030	370.0	540.0	4.00

AXLE STANDS

Aluminium axle stand set

- Especially light and stabile
- High level of stability due to the diameter of the base plate
- Safety locking bolt with chain
- Suits itself especially well in combination with jack for the safe bracing of a load
- Aluminium



	Max load t	Stroke way mm	Min total height mm	Max total height mm	
160.0315	3,0	140,0	260,0	400,0	2,20



Steel axle stands with quick adjustment

- 4 feet on each stand
- Solid construction
- For heavy vehicles weights
- High level of stability due to the diameter of the base plate
- Lifting bar made from cast steel
- Quick adjustment (in pairs)
- Height adjustment has 13 stages
- Suits itself especially well in combination with jack for the safe bracing of a load
- Made from solid steel



	Max load t	Stroke way mm	Min total height mm	Max total height mm	
160.0370	3,0	130,0	295,0	425,0	8,00
160.0371	6,0	205,0	400,0	605,0	15,00
160.0372	12,0	250,0	480,0	730,0	26,00

LIFTING TOOLS

Hydraulic bottle jack 2 - 50 t

- Security valve against overload
- Telescopic piston pole
- Additional spindle for extension (not in 30 and 50 t executions)
- Two piece lever arms
- For heavy vehicles weights
- Especially suitable for narrow hard to access areas
- High level of stability
- Ideally suited in combination with jack for the neutralizing and bracing of a load
- Heavy steel construction



	Max load t	Min total height mm	Max total height mm	Hydraulic lift mm	Screw extension mm	Dimension of base plate mm	
160.0350	2,0	181,0	345,0	116,0	48,0	88 x 92	2,90
160.0351	3,0	194,0	372,0	118,0	60,0	92 x 100	3,80
160.0352	5,0	216,0	413,0	127,0	70,0	96 x 112	5,10
160.0354	10,0	230,0	460,0	150,0	80,0	110 x 127	7,10
160.0356	15,0	230,0	460,0	150,0	80,0	113 x 136	9,30
160.0358	20,0	242,0	452,0	150,0	60,0	144 x 155	11,90
160.0359	30,0	285,0	465,0	180,0	-	190 x 155	21,70
160.0360	50,0	300,0	480,0	180,0	-	218 x 176	30,70

Jack for forklifts, hydraulic 4 - 5 t

- Specially developed for forklifts, agricultural and industrial vehicles
- Combination lifting jack with scissor action
- Scissor capacity of 4 tons and cylinder capacity of 5 tons
- Steel wheels



	Max capacity t	Stroke way mm	Min total height mm	Max total height mm	Total length mm	
160.0716	5,0	350,0	65,0	415,0	700,0	47,00

WORKSHOP EQUIPMENT

Mobile cleaning station for small parts

- Mounted metal reservoir with 60 l tank capacity
- Includes compressed air operated drying pistol
- Cleaning brush with strong bristles
- Emptying of the collecting container by means of compressed air
- Includes level indicator display
- Safety valve for the vacuum production and pressure emptying
- High quality 2 mt tube and compressed air pistol
- Good maneuverability due to the two solid rubber direct castors
- Storage compartment for small parts
- Includes stop handles
- Especially suitable for use in the car industry
- Ideally suited for removing of stubborn soiling
- Base unit made out of cast iron



Technical data:

Operating pressure: 6,3 bar (90 psi)
Collecting tank: 500 x 810 x 130 mm

	L mm	B mm	H mm	
160.0040	490,0	580,0	1040,0	54,00

